

RICHMOND SQUARE

605 Richmond Drive | Lancaster, PA | 17601

FOR LEASE

± 3,811 SF AVAILABLE | FOR LEASE



PROJECT

Richmond Square is a newer retail development, ideally and conveniently positioned along Fruitville Pike in Lancaster, PA., with easy access to Route 30. The project includes over 30,000 square feet of retail as well as over 1,000,000 square feet of residential space neighboring the center. Richmond Square is located within a mile of Route 30 (66,000 VPD), which is the major thoroughfare in the Lancaster market. The project also benefits from dense demographic numbers which include 51,882 households within a 5-mile radius, as well as an average household income of \$83,586.

LOCATION

Richmond Square is ideally situated on Fruitville Pike approximately five (5) miles from downtown Lancaster City. Highly traveled Route 722 (Petersburg Road) and Fruitville Pike, provide convenient access for employees, visitors or residents to the subject property. Located in Manheim Township, the project is located within a fast-growing market of residential and retail, making it the ideal location for any use.

TRADE AREA

Approximately 11,000,000 visitors come to the Lancaster area each year, generating a direct economic impact of \$1.92 billion. The trade area is ranked 5th among the 49 DMAs in Pennsylvania. The immediate trade area has also seen a growth in population of 4.9% in the last 10 years, which is above the national average. The closest regional retail corridors to Richmond Square include Route 30 and Fruitville Pike. Route 30 is highlighted by The Park City Mall, which is a regional enclosed mall anchored by The Bon Ton, Boscov's, JCPenney, Kohl's, and Sears; other co-tenants include Apple, Michael Kors, Express, H&M and more. Fruitville Pike is highlighted by the Shoppes at Belmont, which is a high-end new construction shopping center anchored by Target and Whole Foods; co-tenants include Nordstrom Rack, PF Chang's, Starbucks, ULTA & Dick's Sporting Goods.

DEMOGRAPHICS	3 MILE	5 MILE	7 MILE
POPULATION	37,111	129,312	230,285
TOTAL EMPLOYEES	30,333	106,365	187,169
AVERAGE HHI	\$99,430	\$86,415	\$77,869
TOTAL HOUSEHOLDS	14,961	52,045	90,013

TRAFFIC COUNTS **FRUITVILLE PIKE: 14,000 VPD**



ACTIVE MEMBER OF:
RETAIL BROKERS NETWORK

York Office: 3528 Concord Rd. York, PA 17402
 Exton Office: 1 East Uwchlan Avenue, Suite 409, Exton, PA 19341
 Lancaster Office: 150 Farmington Lane, Suite 201, Lancaster, PA 17601

ABE KHAN | BRAD ROHRBAUGH | CHAD STINE
 717-843-5555
 www.bennettwilliams.com

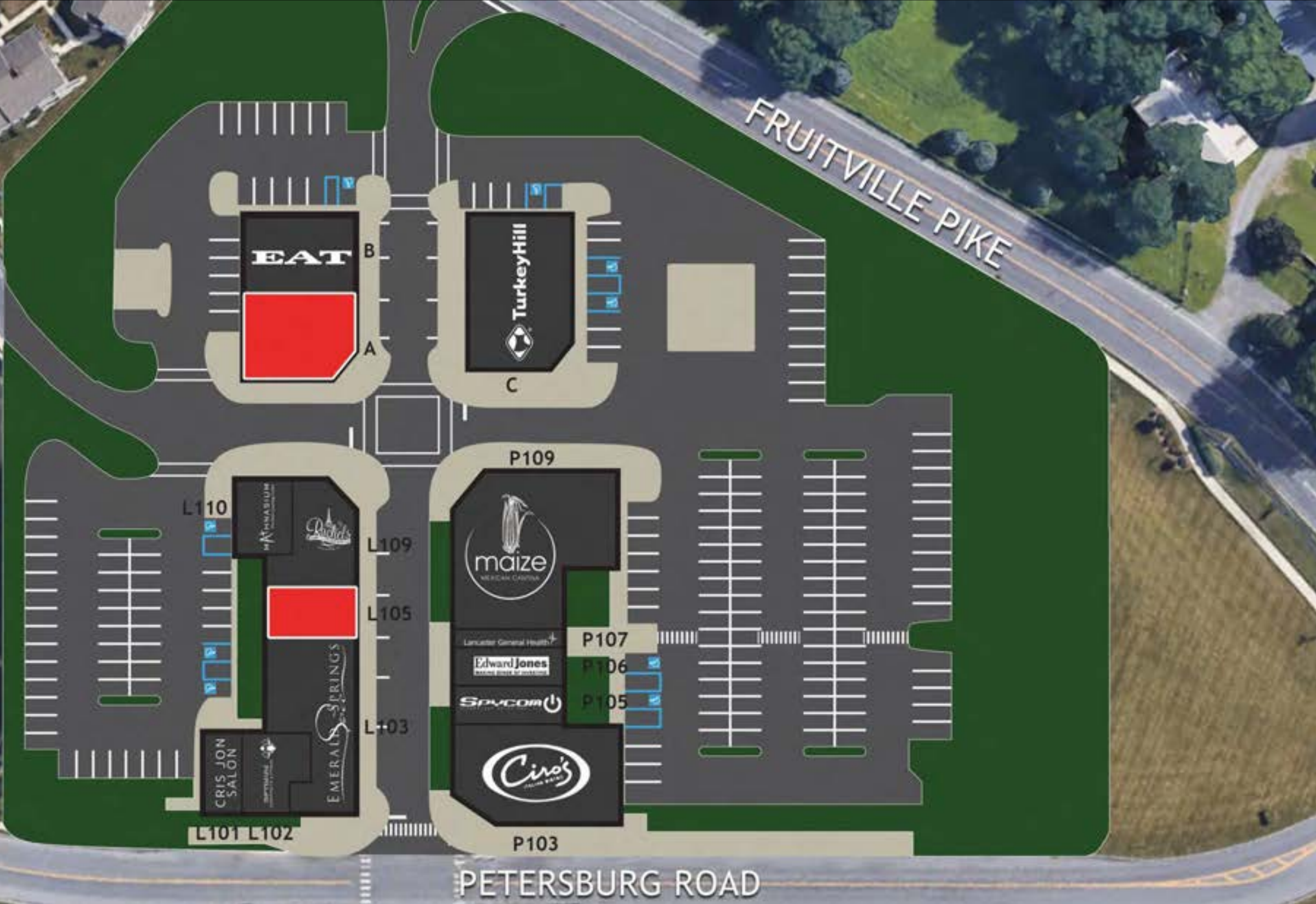
Bennett Williams
RETAIL

RICHMOND SQUARE

605 Richmond Drive | Lancaster, PA | 17601

FOR LEASE

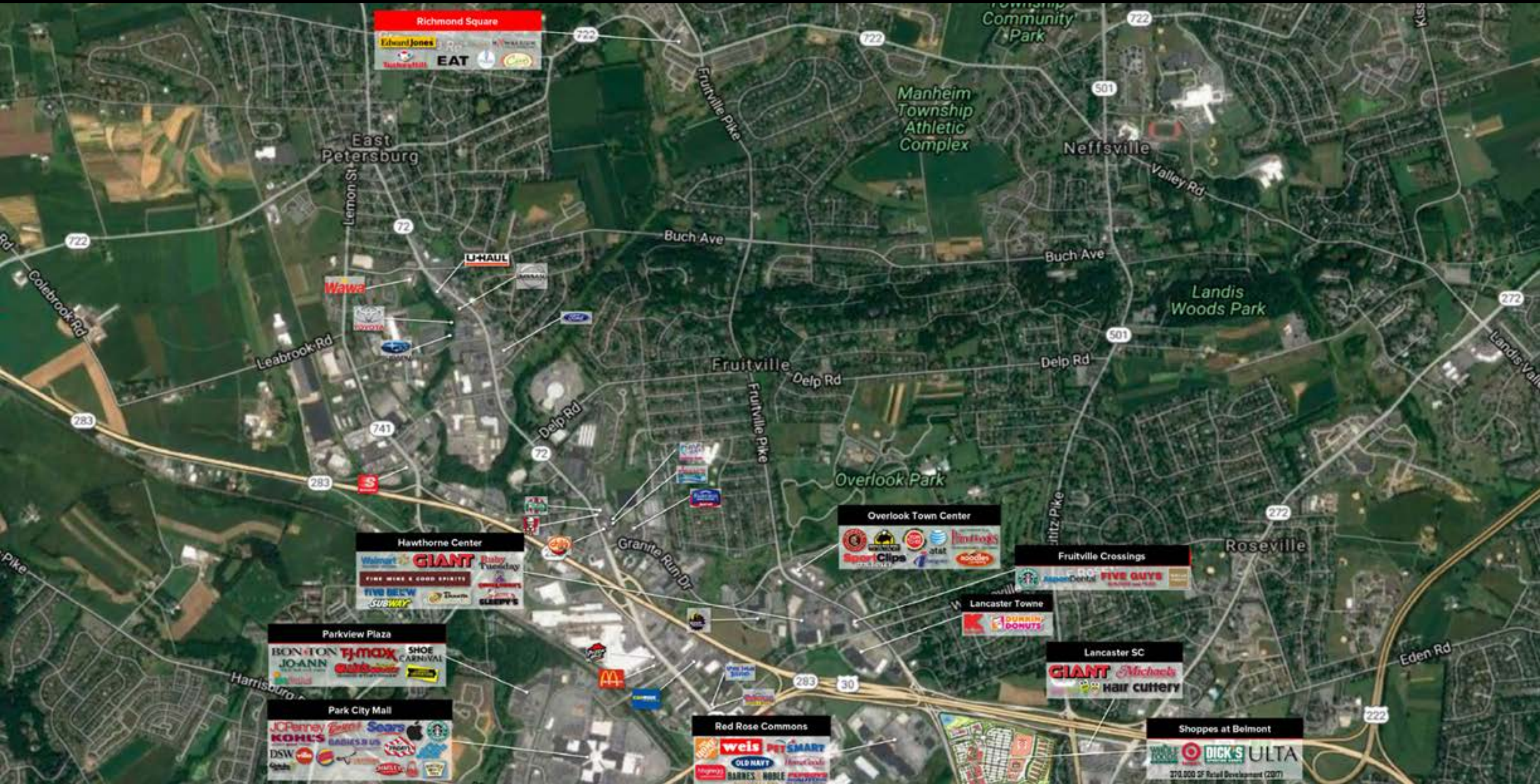
TENANT ROSTER		
SPACE	TENANT	AREA (SQ FT)
A	AVAILABLE	2,600
B	EAT	1,764
C	TURKEY HILL	4,275
L101	CRIS JON SALON	1,317
L102	OPTIMUM CHIRO & FITNESS	1,515
L103	EMERALD SPRING SPA	1,317
L105	AVAILABLE	1,211
L109	RACHEL'S CAFE & CREPERIE	2,436
L110	MATHNASIUM	1,494
P103	CIRO'S ITALIAN BISTRO	4,993
P105	SPYCOM	940
P106	EDWARD JONES	1,295
P107	LANCASTER GENERAL	1,630
P109	MAIZE MEXICAN CANTINA	5,000



RICHMOND SQUARE

605 Richmond Drive | Lancaster, PA | 17601

FOR LEASE



ACTIVE MEMBER OF:
RETAIL BROKERS NETWORK

York Office: 3528 Concord Rd. York, PA 17402
Exton Office: 1 East Uwchlan Avenue, Suite 409, Exton, PA 19341
Lancaster Office: 150 Farmington Lane, Suite 201, Lancaster, PA 17601

ABE KHAN | BRAD ROHRBAUGH | CHAD STINE
717-843-5555
www.bennettwilliams.com

Bennett WILLIAMS
RETAIL